



TUT ANKH AMUN

Discover the King's Tomb
Through Virtual Reality

A new, innovative and exciting approach to using technology for the preservation of Egypt's cultural heritage.

The Supreme Council of Antiquities, Factum Foundation and the US embassy in Cairo are pleased to introduce this unique opportunity to discover the Tomb of King **Tutankhamun**.

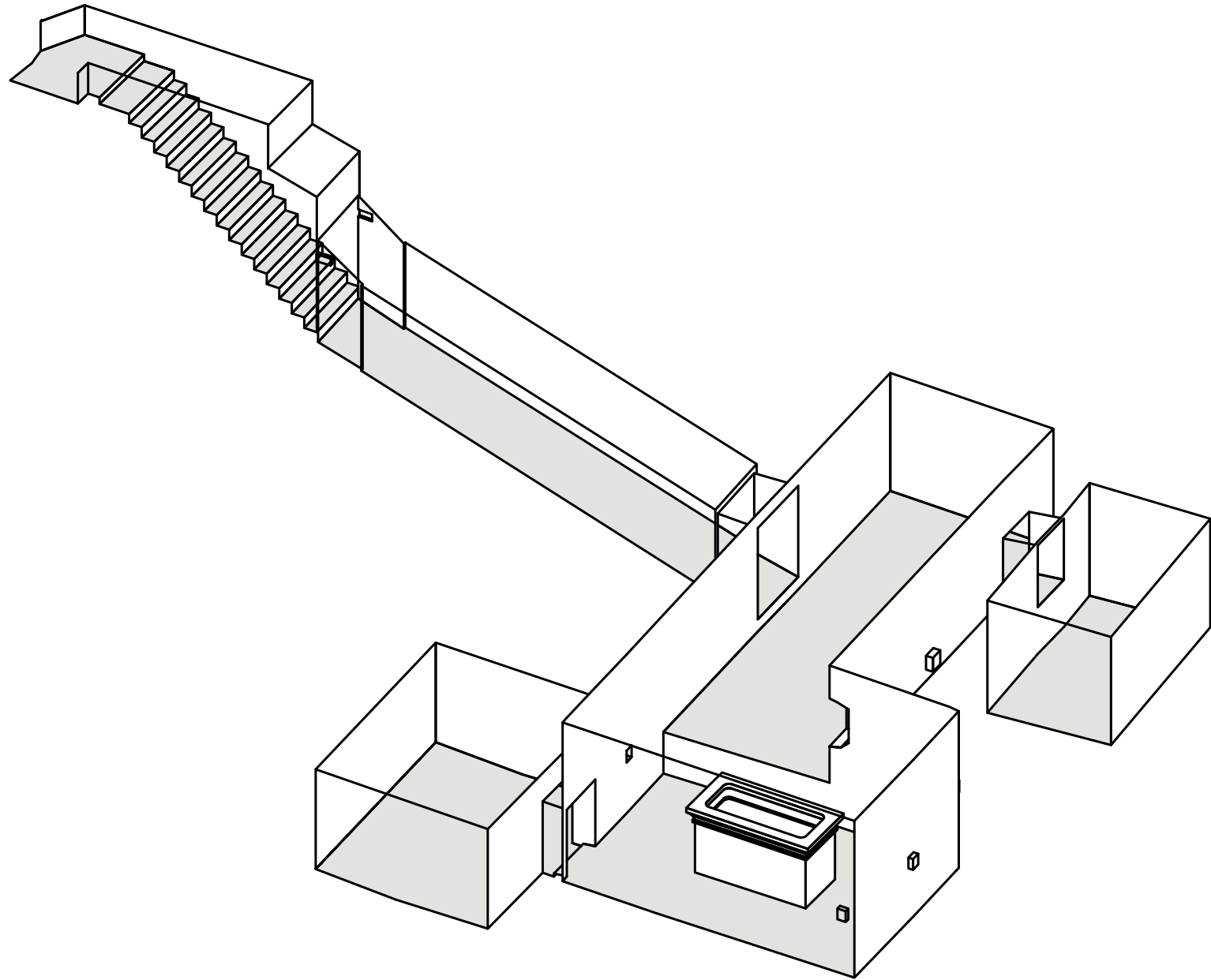
Welcome



100 years after the discovery of the tomb of Tutankhamun by Howard Carter and his team, a state-of-the-art Virtual Reality (VR) experience has been created by the Factum Foundation for Digital Technology in Preservation, using data recorded for the Ministry of Tourism and Antiquities.

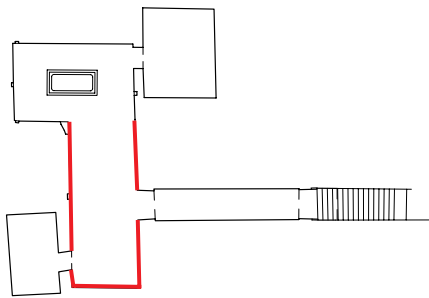
In the VR experience, the tomb can be seen in great detail and within a virtual environment that can assist academic study and research and continue to generate interest. This immersive experience allows for the exploration of visuals and perspectives that are not possible in the original physical tomb.





Antechamber

The first room is the antechamber where many of the household items for Tutankhamun's voyage to eternity were found.

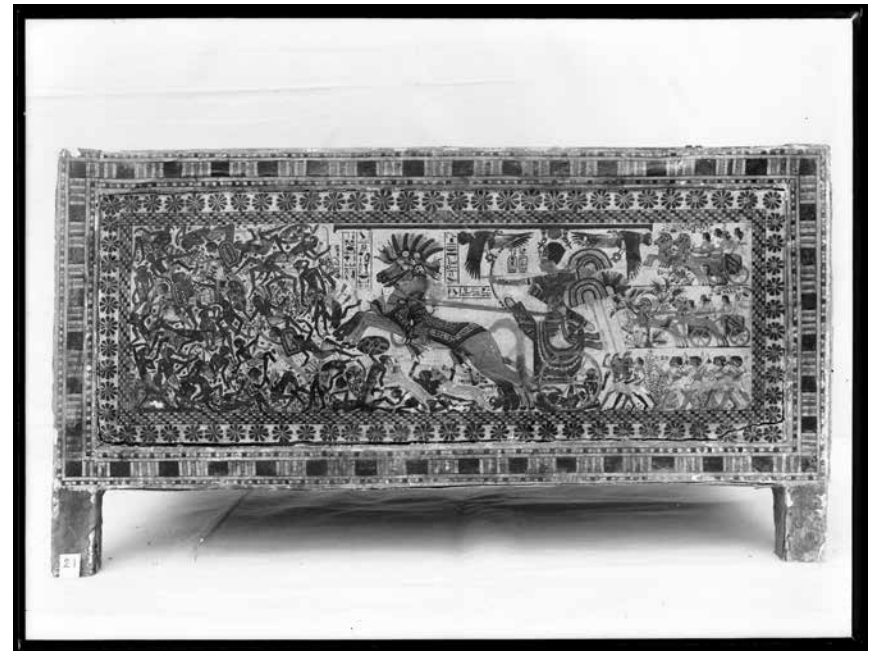


Painted Wooden Chest

Wood, gesso, paint

Of all the many boxes and chests found in the tomb, this is the most magnificent. It is covered on the long sides and lid with paintings showing the king in furious action in his chariot, either charging down the traditional enemies of Egypt or hunting dangerous wild animals in the desert.

Inside the box were clothes and robes, some child-sized, sandals and a headrest.

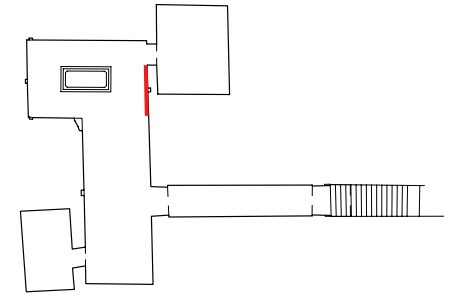




The Burial Chamber

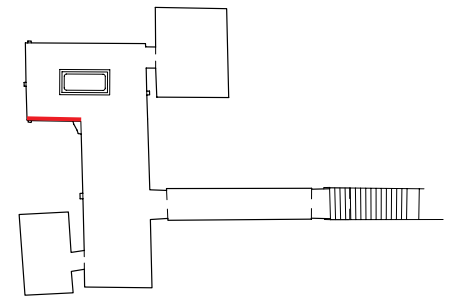
East Wall

Upon this wall, the king is being carried to his tomb by mourners, high officials of Upper and Lower Egypt, and possibly Horemheb towards the rear procession. In this scene Tutankhamun's mummy is being transported across the ground on a ship anchored to a sled with a canopy providing shelter and protection to his mummy.



South Wall

Tutankhamun is surrounded by the God Anubis and the Goddess Hathor. They hold Ankhs in their hands, representing Tutankhamun's eternal life in the Afterworld.

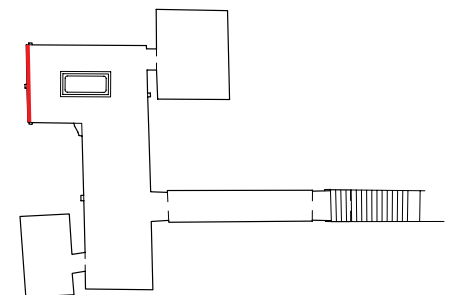


West Wall Baboons

The west wall is divided into boxes and depicts an extract from the Book of Amduat or "What is in the Underworld".

At the top of this wall there is the solar boat, in which the scarab god (a beetle) transports the sun during its journey across the sky.

The twelve baboon deities represent the twelve hours of the night through which King Tut travels before his rebirth at dawn.



North Wall

The left-hand scene

Tutankhamun is welcomed by Osiris into the underworld. Osiris is shown as a mummy, with green skin referring to his role as a god of rebirth, agriculture, and vegetation.

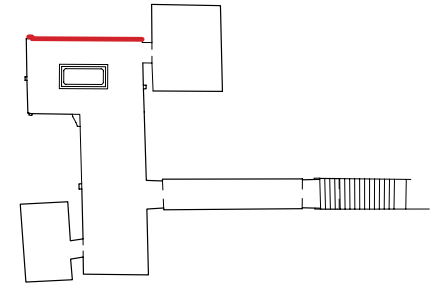
The middle scene

The living king is welcomed into the realm of the gods by Nut, goddess of the sky. Water flows from Nut's hands towards Tutankhamun's as a sign of welcome.

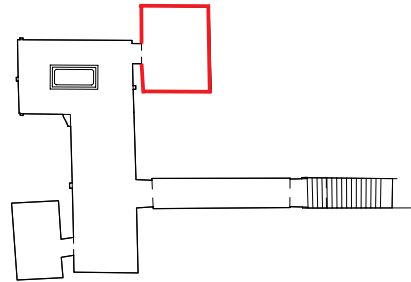
The right-hand scene

King Tut's chief advisor, Ay, performs the opening of the mouth ceremony. This was a ritual designed to revive the dead king so that he could eat and drink in the afterlife.

By picturing himself carrying out this ritual, Ay asserted his claim to be Tutankhamun's successor. The claim worked: Ay became the next pharaoh after Tutankhamun's death.



Treasury Room



Anubis

Painted and gilded wood, silver, quartz, calcite, obsidian

Anubis was the god of mummification and guide to the world of the dead. This imposing representation of the jackal god, carved from wood thinly coated with gesso and painted black, stood watch over Tutankhamun's canopic shrine.

Cartouche-shaped box

Wood, gilding, ebony, ivory

This ingenious wooden box takes the form of a cartouche, the symbolic representation of an oval loop of rope knotted at the bottom which enclosed some of ruler's royal titles. In this case, finely carved hieroglyphs made from ebony and tinted ivory spell out the king's birth name or nomen: "Tutankhamun, ruler of Upper Egyptian Heliopolis".



Canopic Golden Shrine

Gilded wood

During the mummification process, the liver, lungs, stomach and intestines were removed from the deceased, embalmed separately and placed in four containers, the canopic jars. The arrangement for Tutankhamun's internal organs was particularly elaborate and magnificent. Perhaps because there was no room in the Burial Chamber, the canopic shrine stood in the Treasury, guarded by Anubis.

The shrine itself, made of gilded wood decorated in relief, was enclosed within an outer canopy on a sledge. Standing on the sledge on each of the four sides were elegant figurines of the four goddesses who guarded the king's viscera, their arms outstretched protectively. One of these, Selket, is shown with her scorpion attribute on the head.

Canopic Chest

Calcite, painted

The canopic chest for storing Tutankhamun's embalmed viscera was carved from a single piece of calcite Egyptian alabaster), divided into four sections internally.

Four canopic coffins were topped by human-headed stopper, possibly depicting Tutankhamun himself, wearing the nemes headdress.



Boat (EXIT)

Painted wood, linen

Boats were an essential means of transport in ancient Egypt. Boats were also an important feature in the royal funeral as they ferried the body across the river from the land of the living to the land of the dead. A total of thirty-five were found in Tutankhamun's tomb.



Did you know that the U.S. government has invested over \$100 million to protect Egypt's extraordinary cultural heritage?

The U.S. government has partnered with the Government of Egypt to protect some of Egypt's most famous sites like the Sphinx, Karnak Temple Complex, and Luxor Temple.

Photographs by Harry Burton, the Griffiths Institute, Oxford



